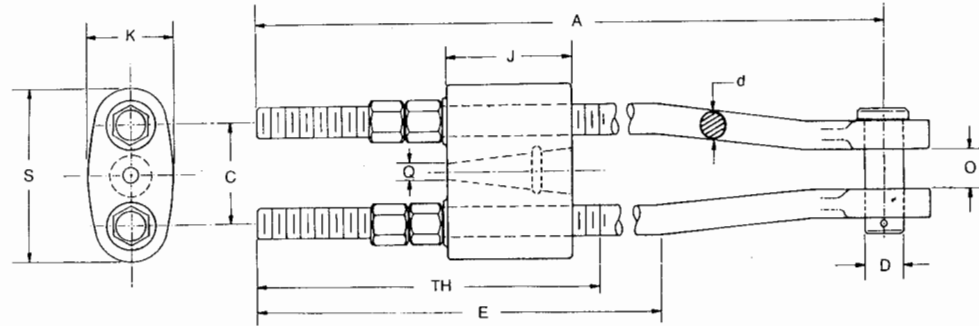


Open Bridge Sockets



Material Specification

- Sockets up to 4" are ASTM A148 steel, grade 90-60
- Sockets above 4" are ASTM A148 steel, grade 105-85
- All sockets are magnetic particle inspected at critical areas and proof tested on special order

Tolerances

- Dimensions under 4": $\pm 1/8"$
- Dimensions over 4": $\pm 1/4"$
- Q (smaller sizes): $\pm 1/32"$
- D: + 0 - $1/32"$ in a self-colored socket

Note

This drawing illustrates one groove used on sockets 1/2" and smaller. Sizes 9/16" – 1 1/2" have two grooves; sizes 1 5/8" and larger have three grooves.

PART #	ROPE DIA	STRAND DIA	STD. TAKE UP	STD.	A FOR				C	d	D
					48"	72"	84"	96"			
601	1/2	1/2	9	20	59	83	95	107	3 3/8	5/8	1 3/16
602	5/8	9/16-5/8	9	22	61	85	97	109	4 3/8	3/4	1 3/8
603	3/4-7/8	11/16-3/4	9	23	62	86	98	110	4 3/4	1	1 5/8
604	1	13/16-7/8	9	25	64	88	100	112	5 3/16	1 1/8	2
605	1 1/8	15/16-1	9	26	65	89	101	113	5 3/4	1 1/4	2 1/4
606	1 1/4	1 1/16-1 1/8	12	30	66	90	102	114	6	1 3/8	2 1/2
607	1 3/8	1 3/16-1 1/4	12	33	69	93	105	117	6 3/4	1 5/8	2 3/4
608	1 1/2	1 5/16-1 3/8	12	34	70	94	106	118	7 3/16	1 3/4	3
609	1 5/8-1 3/4	1 7/16 - 1 1/2	15	39	72	96	108	120	8 1/8	2	3 1/2
610	1 7/8-2	1 9/16-1 3/4	15	42	75	99	111	123	9	2 1/4	3 3/4
611	2 1/8-2 1/4	1 13/16 - 2	18	50	80	104	116	128	10 1/4	2 1/2	4 1/4
612	2 3/8-2 1/2	2 1/16-2 1/4	18	52	82	106	118	130	11 1/2	2 3/4	4 3/4
613	2 5/8-2 3/4	2 5/16-2 3/8	18	54	84	108	120	132	12 3/4	3	5
614	2 7/8-3	2 7/16-2 5/8	21	59	86	110	122	134	13 3/8	3 1/4	5 3/4
615	3 1/4	2 11/16-2 3/4	21	61	88	112	124	136	14 1/8	3 1/2	5 3/4
616	3 1/2	2 7/8-3	21	63	90	114	126	138	15 1/4	3 3/4	6 3/4
617	3 3/4	3 1/8-3 1/4	24	70	94	118	130	142	17 1/4	4	7
618	(none)	3 3/8-3 1/2	24	75	99	123	135	147	18 5/16	4 1/4	7 1/4
619	4	3 5/8-3 3/4	24	80	104	128	140	152	19 3/8	4 1/2	7 1/2
620	4 1/4-4 3/8	3 7/8-4	24	84	108	132	144	156	20 7/16	4 3/4	7 3/4
621	4 1/2-4 3/4	4 1/8-4 3/8	25	87	110	134	146	158	20	5	7 1/4
622	5-5 1/4	4 1/2-4 3/4	27	90	111	135	147	159	21	5 1/4	7 1/2
623	5 1/2-5 3/4	4 7/8-5 1/8	30	96	114	138	150	162	22	5 1/2	8
624	6	5 1/4-5 1/2	31	99	117	141	153	165	23	2 3/4	8 1/2



Open Bridge Sockets

E FOR								TH FOR							WT (lbs)				
TAKE-UP								TAKE-UP							TAKE-UP				
STD.	48"	72"	84"	96"	J	K	O	STD.	48"	72"	84"	96"	Q	S	STD.	48"	72"	84"	96"
14 1/2	53 1/2	77 1/2	89 1/2	101 1/2	3 1/8	2 1/8	1 1/4	10 1/2	49 1/2	73 1/2	85 1/2	97 1/2	5/8	4 3/4	9	16	19	21	23
15	54	78	90	102	3 1/4	2 1/2	1 1/2	10 3/4	49 3/4	73 3/4	85 3/4	97 3/4	13/16	5 7/8	16	26	29	31	35
16 1/2	55 1/2	79 1/2	91	103	4 3/8	3 1/4	1 3/4	11 1/4	50 1/4	74 1/4	86 1/4	98 1/4	1	6 1/2	28	45	50	54	60
17	56	80	92	104	5	3 3/4	2	11 1/2	50 1/2	74 1/2	86 1/2	98 1/2	1 1/8	7 3/8	40	62	69	75	83
18 1/2	57 1/2	81 1/2	93	105	5 13/16	4 1/8	2 1/4	11 3/4	50 3/4	74 3/4	86 3/4	98 3/4	1 1/4	8 1/8	55	82	90	98	106
21 1/2	57 1/2	81 1/2	94	106	6	4 11/16	2 1/2	15	51	75	87	99	1 1/2	8 5/8	68	98	109	119	129
22 1/2	58 1/2	82 1/2	95	107	6 1/4	4 3/4	3	15 1/2	51 1/2	75 1/2	87 1/2	99 1/2	1 5/8	9 3/4	100	143	157	169	185
23 1/2	59 1/2	83 1/2	96	108	6 7/16	5 1/4	3	15 3/4	51 3/4	75 3/4	87 3/4	99 3/4	1 5/8	10 7/16	124	173	189	207	223
27	60	84	97	109	6 1/2	6 3/8	3 1/2	19 1/4	52 1/4	76 1/4	88 1/4	100 1/4	2	11 11/16	108	239	260	280	302
28 1/2	61 1/2	85 1/2	98	110	7 7/8	7 1/4	4	19 3/4	52 3/4	76 3/4	88 3/4	100 3/4	2 1/4	13 1/8	249	323	350	376	404
33	63	87	99	111	8 11/16	8 1/8	4 1/2	23 1/4	53 1/4	77 1/4	89 1/4	101 1/4	2 1/2	14 3/4	356	439	463	497	531
35 1/2	64 1/2	89 1/2	101	113	10 1/8	8 3/4	5	23 3/4	53 3/4	77 3/4	89 3/4	101 3/4	2 3/4	16 1/2	485	586	627	647	707
36 1/2	66 1/2	90 1/2	103	115	11 13/16	8 1/8	5 3/8	24 1/4	54 1/4	78 1/4	90 1/4	102 1/4	3	18	610	730	778	826	874
41	68	92	104	116	12 13/16	10 5/8	6	27 3/4	54 3/4	78 3/4	90 3/4	102 3/4	3 1/4	19 1/4	776	903	960	1018	1072
42 1/2	69 1/2	93 1/2	106	118	13 1/2	11 1/4	6 1/4	28 1/4	55 1/4	79 1/4	91 1/4	103 1/4	3 1/2	20 1/4	882	1030	1095	1161	1225
45	72	96	108	120	15 1/4	11 7/8	7 1/2	28 3/4	55 3/4	79 3/4	91 3/4	103 3/4	3 3/4	22	1180	1349	1425	1499	1575
50	74	98	110	122	17 1/8	13	7 3/4	32 1/4	56 1/4	80 1/4	92 1/4	104 1/4	4	24	1508	1679	1765	1851	1935
53	77	101	113	125	19 1/4	13 7/8	8	32 3/4	56 3/4	80 3/4	92 3/4	104 3/4	4 1/8	26	1621	1821	1917	2013	2109
55 1/2	79 1/2	103 1/2	115 1/2	127	18 1/4	12 3/4	8 1/4	33 1/4	57 1/4	81 1/4	93 1/4	105 1/4	4 1/2	27 5/8	2031	2251	2360	2468	2129
57 1/2	81 1/2	105 1/2	117 1/2	129	20	13 7/16	8 1/2	33 3/4	57 3/4	81 3/4	93 3/4	105 3/4	4 3/4	29 7/16	2444	2684	2805	2925	3047
59 1/2	82	107	118 1/2	130	20	14	8 1/4	36	58 1/2	82 1/2	94 1/2	106 1/2	5 1/4	28	2310	2480	3100	3234	3368
62	83	109	119	131	21 1/4	14 7/8	8 1/2	37	59 1/2	83 1/2	95 1/2	107 1/2	5 3/4	30 1/4	2910	3130	3680	3828	3976
67	85	111	121	133	22 3/4	16	8 3/4	40 1/2	60 1/2	84 1/2	96 1/2	108 1/2	6 1/4	31 1/2	3425	3625	4120	4762	4442
69 1/2	87 1/2	113	123 1/2	135	24 1/2	17	9	41 1/2	62	86	98	110	6 1/2	33	4165	4400	4600	4778	4956