



WOLF STEEL FOUNDRY

A History of Innovation

Wolf Steel Foundry was founded in 1989 to expand Ulven's capabilities by offering castings to existing and new customers. Today, Wolf Steel is a midsized foundry with the flexibility to quickly adapt to customer needs while achieving consistent on-time shipments. Wolf has built a reputation for partnering with customers to meet their requirements for high quality products and assemblies.

Wolf's objective has always been to grow the company with a broad customer base in a wide variety of industries. As with any Ulven company, all customers, whether small, medium, or large, receive priority treatment. This superior customer service comes from our finest and most valuable ingredient: our employees.



In 2011 Wolf Steel embarked on a plant expansion that doubled the size and capacity of the foundry. This project included the installation of new equipment in all departments and significant improvements in product flow. Just as importantly, these improvements have created a safer and more environmentally friendly workplace.

As part of this expansion project Wolf implemented a Lean Manufacturing/Continuous Improvement Program in its manufacturing and administrative processes. While tremendous improvements are already evident throughout all operations, the Lean Journey will continue and will make Wolf even better.

Competitive Advantage



An important goal of Wolf Steel Foundry is to give our customers a competitive advantage in their marketplace by delivering a superior quality part while optimizing their Supply Chain. In order to meet this goal we are:

- Giving the customer the option of purchasing either as a cast or completely machined, ready to use part.
- Producing a cleaner casting that has a better surface finish, tighter tolerances, and requires less machining by the customer.
- Improving operational efficiencies driven by Lean/Continuous Improvement and becoming ISO certified in 2014.
- Reducing manufacturing costs with targeted production expansion and capital investments into new processes /technologies.

We are committed to being an important and continuously improving part of the customer's team.

Wolf is a mid-sized foundry with the flexibility to quickly adapt to customer needs. The foundry uses a “no-bake” sand molding system that allows us to produce high quality parts ranging in size from 1 lb. to over 2,000 lbs., and in quantities of one piece to thousands of pieces. With in-house testing and sister company machining, we have close control over the production process, and are able to achieve a superior level of on-time shipments.

Wolf has a diversified customer base and provides products to customers who serve many industries. Some of these are recreation (ski lift parts), defense (components for defense contractors), mining, rigging, food processing, construction/infrastructure, timber, pump manufacturers (valves and impellers), and petroleum (a wide variety of equipment components). The company's goal is to be a valued partner and contributor to our customer's success.

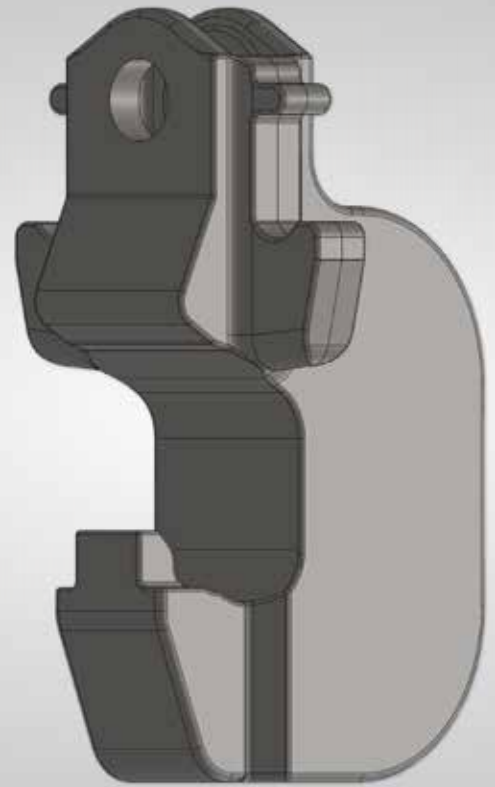
Markets Served



Investment in Technology

With 25 years of experience Wolf understands that a key element in our customers' success is the delivery of quality castings. With that in mind, the whole team strives to integrate the most advanced technologies in the design and manufacture of all products. Throughout our history Wolf Steel has invested in technology that advances and enhances our ability to deliver the highest quality product to customers.

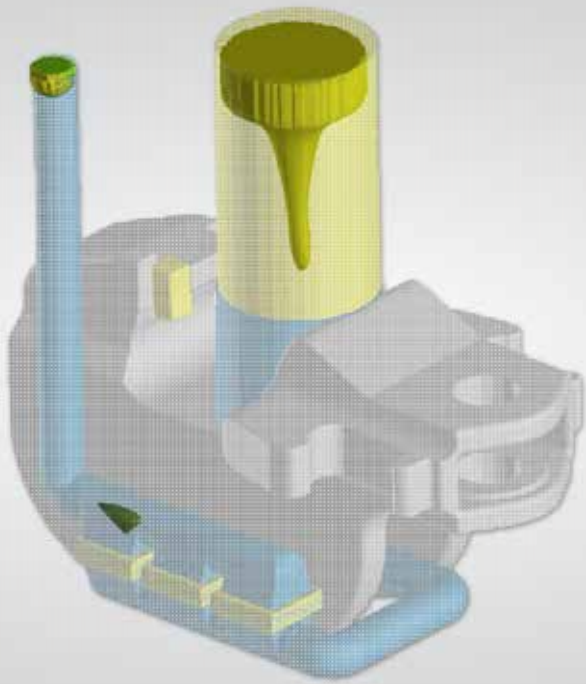
Wolf takes great pride in its continued efforts to provide innovation and improvements in both processes and products, and is committed to being an industry leader in software, equipment, and people. All of this is done with one thing in mind: producing the finest, strongest, and most advanced products on the market. Customers expect nothing less from Wolf Steel, and we strive to meet and exceed customer expectations.



SOLIDWORKS 3D MODEL



Engineering Excellence



SOLID - FLOW CAST

Wolf's engineering team uses the latest technology built on top of trusted foundry practices to create the best product available. Starting with an existing pattern or a conceptual solid model, the pattern is modeled in Solidworks. Additional rigging is added using part specific calculations. The design is then optimized using state of the art simulation software which electronically reproduces the filling and solidifying of molten metal in a virtual mold. Wolf partners with a number of experienced pattern makers to create the finalized tooling.

The simulation technology improves the trial and error historically involved with new tooling and results in a higher quality part and faster time to production. Prior to production release, the pattern is verified by casting a sample part that is tested with magnetic particle inspection, dimensionally checked and volumetrically inspected either through radiographic testing or ultrasonic inspection.

Many of the products Wolf produces are used in applications with critical safety requirements. Therefore, Quality Assurance is an absolute must. This same attitude is taken by Wolf's management and employees toward all of the foundry's production — quality is an essential part of the production process. It starts with pattern design and continues with in-house testing for correct chemistries.

All methods of heat treating are available, and are performed by qualified professionals. Magnetic particle inspection, radiographic, ultrasonic, and dye penetrant inspections are performed by certified inspectors.

Upon request, certification to specific industry requirements or other customer specific criteria will be sent with each shipment.

Quality Assurance



Process & Capabilities



- No-bake sand mold system for high quality “as cast” finish.
- Castings also available in a variety of finishes.
 - Sand blasted
 - Galvanized
 - Powder coated
 - Painted
 - Machined
- CNC and manual machining available with finished tolerance to customer and industry standards
- Capable of producing parts over 2000 lbs.
- Order sizes can be from one piece to thousands of pieces.
- All types of heat treating available.
- Certified non destructive testing available.
 - Magnetic Particle
 - Radiographic
 - Ultrasonic
 - Dye penetrant
- Product available in a wide range of Brinell hardness.
Certified charpy testing available

Wolf can pour a wide variety of materials, including:

Carbon steel

Low alloy steel

Martensitic stainless steel

Ferritic stainless steel

Austenitic stainless steel

Monel steels

Nickle based alloy steels

High chrome wear resistant steels

Custom chemistries



An Ulven Company

As one of the group of Ulven companies, Wolf Steel is able to draw upon resources that few companies its size have available. In addition to machining, engineering and testing services, these include employee benefit programs, finance and insurance programs, and management experience and expertise. Many customers find that it is very convenient and time saving to do business with more than one of our family of companies.

Ulven Forging — produces forgings to customer specifications



Open die forging
Closed die forging
Upset forging
CNC and manual machining
Pull testing

Skookum — produces a line of rigging products



Blocks (general purpose, trawl, & oilfield)
Hooks, shackles, and sheaves
Master links and assemblies
Robotic welding capabilities
Pull testing equipment

Houston Structures — infrastructure products



Wire rope assemblies
Ready to ship wire rope end fittings



P.O. BOX 249
HUBBARD OREGON 97032
TEL 503.651.3400
FAX 503.651.2847

WWW.ULVENCOMPANIES.COM/WOLFSTEEL